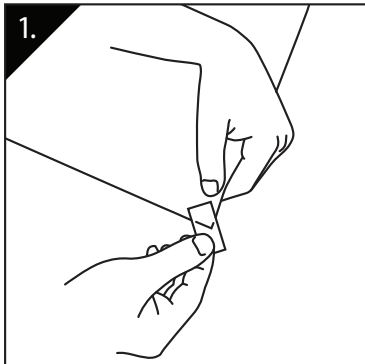


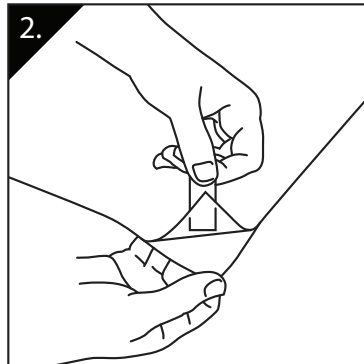
TIPS 'N' TRICKS

Applying QM-CLMNTD to Media

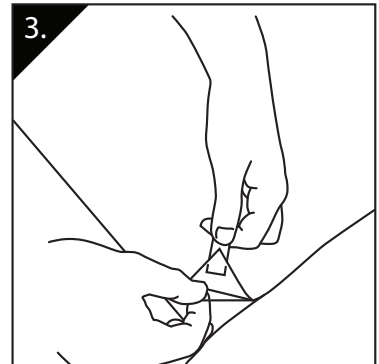
Preparing to Laminate Media:



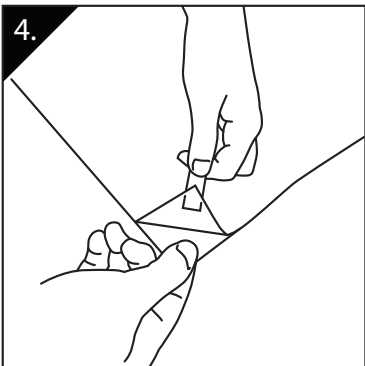
1. Apply a piece of tape to the permanent adhesive liner side (clear) of CLMNTD.



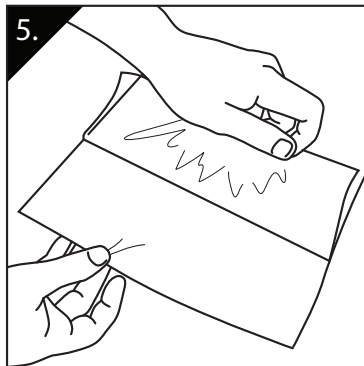
2. Pull back Liner. Liner and CLMNTD will stay together.



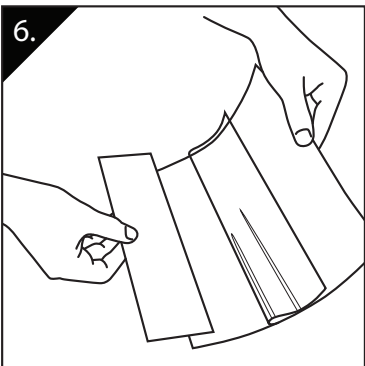
3. Separate CLMNTD from permanent adhesive side liner (clear).



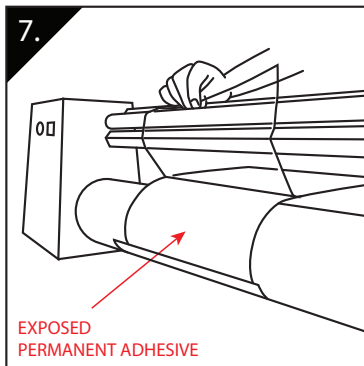
4. Stick CLMNTD back down onto removable side liner (white).



5. Pull back permanent side liner (clear) exposing adhesive across the entire width.

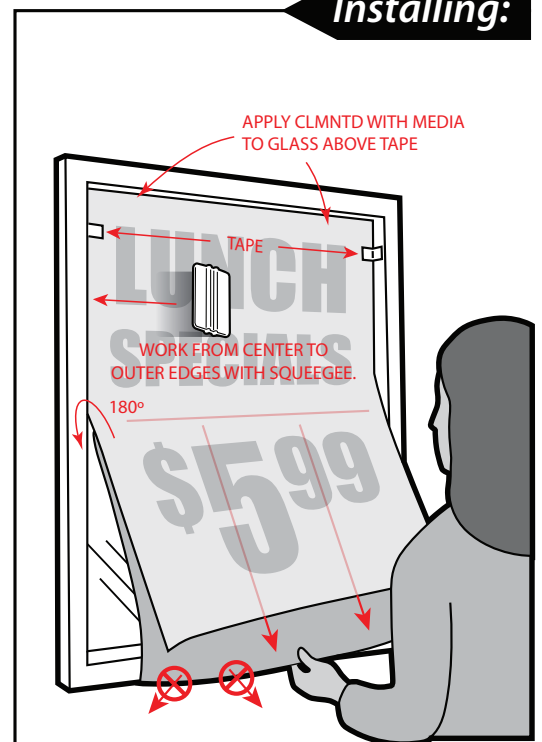


6. Create a leader edge for the laminator using a scrap rectangular piece of media. Slightly overlap and stick it to the permanent adhesive.



7. Load CLMNTD leader edge into laminator exposing permanent adhesive side. Attach permanent adhesive side liner (clear) to the take-up roll.

Installing:



DO NOT PULL AWAY LINER AT AN ANGLE. KEEP PARALLEL WITH PRINT.