

TIPS 'N' TRICKS

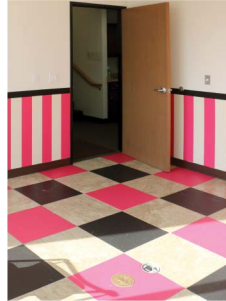


TASQUE & TASQUEFORCE FLOOR INSTALLATION

Installation of TASQUE for withstanding heavy traffic

Installation of TASQUEFORCE for withstanding most weather conditions.

QM-TASQUE

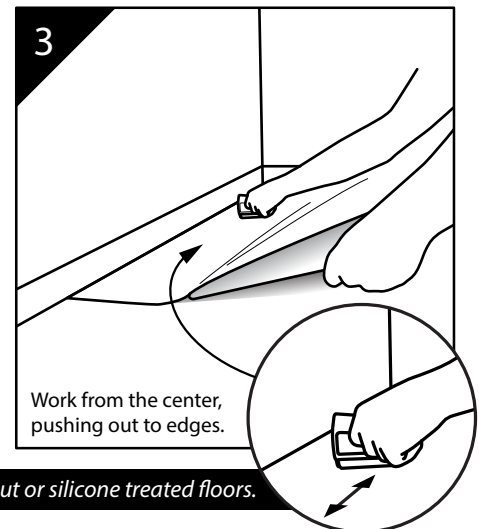
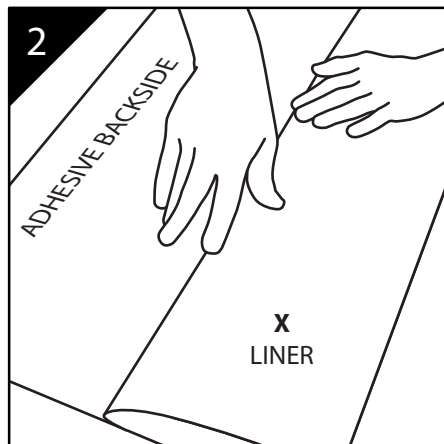
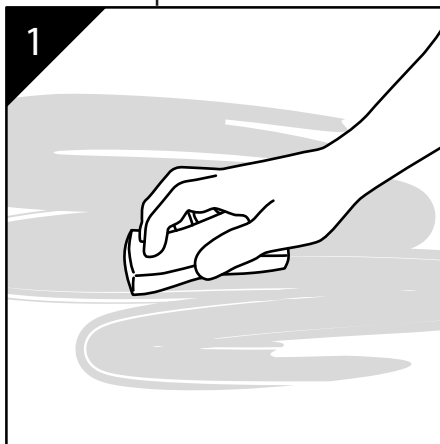


QM-TASQUEFORCE



Do not apply the edges of your graphic over seams or uneven cracks in concrete, in the middle of tiles or any grout lines surrounding tiles.

PREPARE: Floor or surface to be covered.



1 Required Step:
Thoroughly clean entire surface area to be covered.

2 With the print side down, pull back the liner about 8 inches from the top exposing the adhesive. Crease liner as shown.

3 Critical Step:
2-person recommended.
Carefully position the exposed adhesive side to the floor or surface. Burnish with a roller or squeegee, working from the center outward, side to side pushing out any air pockets, while the 2nd person pulls the liner back, away from the media-to-surface contact area.

Continue this method until reaching the end of media.

AVOID: Installing over loose or uneven tile, grout or silicone treated floors.

TASQUE/TASQUEFORCE: For counters and floors, clean the surface with water. Dirty surfaces, use dish soap, water-based, non-solvent household cleaners without wax additives to fully clean surface before installing. Allow solution to fully evaporate.

Use a roller or squeegee to install graphic to receive maximum longevity. Use heavy downward pressure while rolling out the graphics.

It is critical to focus on edge sealing. Sealing the edges of your graphics will help protect against water from getting under the graphic, edge lifting, and evaporating causing bubbles. The edges of your graphic should never be applied over seams or uneven cracks in concrete, in the middle of tiles or any grout lines surrounding tiles. Poorly sealed edges are the leading cause of early floor graphic failures. Using a rubber roller around the edges of the entire graphic will give you maximum longevity.

Industrial/Retail Floor Scrubbers/Cleaners – If possible, please use water-based cleaners like dish soap to clean the floor graphics by hand or mop. Floor scrubbers can lift edges of floor graphics and cause early failures.

For removal, it is best to remove graphics when the surface temperature is above 75° F. The warmer the surface, the easier the removal will be. The colder the surface, the more aggressive the adhesive will be. For intricate contour cut graphics, or large panels, we would recommend a heat gun to make removal as efficient and as quick as possible.